

Energy Audit Report (2022-23)



VELS INSTITUTE OF SCIENCE, TECHNOLOGY AND ADVANCED STUDIES (VISTAS)

Velan Nagar, P.V. Vaithiyalingam Road, Pallavaram, Chennai-600 117,
Tamil Nadu, India

Audit Date: 3rd April 2023

Pragnaa

Pragnaa Shree Venture India Pvt. Ltd
Door No. 4 & 5, Flat No. F-2, Daya Garden, First Floor, 2nd Cross
Street, New Colony, Chrompet, Chennai – 600 044

INDEX

S. No	Contents	Page No
1	Executive Summary	2
2	Introduction to VISTAS	5
3	General Information of VISTAS	11
4	Facilities	14
5	VISTAS Layout	17
6	Vision, Mission and Core Values	18
7	Management Commitment	20
8	Scope and Goals of Green Audit	21
9	Benefits of Green Audit	22
10	Target Areas of Green Audit	23
11	Methodology	24
12	Auditing Energy Management	26
13	Participation and Consultation	44
14	Best Practices / Initiatives	72
15	Conclusion	74
16	List of Recommendations	75
17	Disclaimer	76

Section 1: Executive Summary

Educational institutions now a day are becoming more sensitive to environmental factors and more concepts are being introduced to make them eco-friendly. To preserve the environment within the campus, various viewpoints are applied by the several educational institutes to solve their environmental problems such as promotion of energy savings, recycling of waste, water reduction, water harvesting etc... The activities pursued by the university can also create a variety of adverse environmental impacts. Environmental auditing is a process whereby an organization's environmental performance is tested against its environmental policies and objectives. The green audit is defined as an official examination of the effects a University has on the environment. As a part of such practice, an internal audit (Green Audit) is conducted to evaluate the actual scenario at the campus.

The green audit can be a useful tool for a University to determine how and where they are using the most energy or water or resources; the University can then consider how to implement changes and make savings. It can also be used to determine the type and volume of waste, which can be used for a recycling project or to improve the waste minimization plan. Green auditing and the implementation of mitigation measures is a win-win situation for all the University, the learners and the planet. It can also create health consciousness and promote environmental awareness, values and ethics. It provides staff and students with a better understanding of Green impact on campus. Green auditing promotes financial savings through the reduction of resource use. It allows the development of ownership and personal and social responsibility for the students and teachers.

The audit process involved Initial Data Collection at, Site walkthrough with the team of VISTAS with the views management including the policies, activities, documents and records.

This was followed by staff and student interviews, collection of data, review of records, observation of practices and observable outcomes.

The baseline data collected from Vels University, VISTAS, Pallavaram, and Chennai are analyzed and conclusions made.

We thank the Management of VISTAS, Dr. R. A. Kalaivani, Dean School of Basic Sciences and Dr. Shanmugasundaram, Dean School of pharmacy and other team members for supporting the complete audit process.

We are happy to submit this green audit report to the **VELS INSTITUTE OF SCIENCE, TECHNOLOGY AND ADVANCED STUDIES (VISTAS).**

Mr. S.K. Srinivasan
Mr. R. Murali
Mr. S. Babu

Pragnaa Shree Venture India Pvt. Ltd

Section 2: Introduction to VISTAS

Vels Group of Institutions run by the Vael's Educational Trust, a charitable, non-profitable organization was established in 1992 by Dr Ishari K.Ganesh to commemorate the fond memory of his father Shri. Isari Velan, the Former Deputy Minister in the popular Govt. of Dr M.G.R was also associated with the film industry. Taking education to the humble thresholds of first-generation learners and weaker sections of society has ever been the objective of Vael's Trust. The vision of Vael's is to inculcate self-reliance and discipline among the youth and also to improve the quality of higher education.

The multifaceted, need-based, magnificent Vels Group of Institutions under Vaels Educational Trust highlight the commitment and dedication toward the noble cause of higher education. Lighting the lamp of education on countless thresholds hidden in the folds and crevices of India, Vael's holds high the blazing beacon of quality Education

Indeed this institution of higher learning and excellence is a leviathan in the ever-expansive ocean of education. The moving spirit behind Vels success story is the founder Chairman and Managing Trustee Dr.Ishari K.Ganesh. Believing staunchly in the philosophy of work, placed on the pedestal of worship, he is a visionary and inspiring academician, who breathed into generations and generations of students, the unsullied breath of quality education, tempered by discipline and enlivened by dedication.

Vels College of Pharmacy was started in 1992. Subsequently, Vels College of Physiotherapy (1993) and Vels College of Science (1993) were started. The Deemed to be University status was conferred, to the above different colleges, after fulfilling all the procedures on 04.06.2008 by the MHRD, Govt. of India with the registered name **VELS INSTITUTE OF SCIENCE, TECHNOLOGY AND ADVANCED STUDIES (VISTAS)**. The Head Office of the VISTAS has located at Pallavaram around 2 km. south of Pallavaram railway station and nearly 4 km away from Chennai Airport. The Deemed University status has been conferred by UGC after taking into account the

rich experience accumulated by the Management and the Quality maintained in the field of Higher education.

VISTAS has blossomed into a multi-disciplinary Institute offering more than 100 UG & PG programs, besides Doctoral programs, through 16 Schools and 45 Departments. Programs have the approval of the relevant Statutory Regulating Agencies such as UGC, AICTE, PCI, BCI, NCTE, DGS etc. VISTAS have a student strength of close to 14500 and a faculty strength of close to 709 with 348 of them having a doctorate. The School of Maritime Studies was awarded an “A1” grade by the Indian Register of Shipping (IRS) in Nov-2019. VISTAS has been accredited by NAAC with a CGPA of 3.01 / 4 (A) grade in March 2019. B.E., Mechanical Engineering, B.E., Computer Science & Engineering, Master of Business Administration, B. Pharmacy, B.E., Marine Engineering, B.E. Electronics and Communication Engineering, B.E., Electrical & Electronics Engineering, B.E., Biomedical Engineering & B. Tech IT (Cloud and Mobile based Application Development) programs have been accredited by the NBA.

VISTAS is also recognized as a Scientific and Industrial Research Organization (SIRO) by the Ministry of Science and Technology, Government of India. VISTAS has improved infrastructure, modernized laboratories, increased hostel accommodation and improved sports facilities. Since becoming a deemed university, syllabi have been revamped periodically in all disciplines. There has been a significant increase in the enrolment of students and more so among women students. The Deemed University is well equipped with ICT facilities such as Smart classrooms, Video Conferencing, Online courses and Vels Knowledge Resource Centre. VISTAS has a Centre for Fish Immunology, Incubation Centre, Central Instrumentation Laboratory, Centre for Energy and Alternative Fuels, Centre for Artificial Intelligence, Centre for Automation and Power Conservation, Centre for Material Research, Centre for Excellence in Pharmaceutical Research & Drug Testing, Centre for Elephant Research, Centre for Bioengineering, Centre of Excellence in Cloud Computing with IBM, Centre of Excellence in Business Analytics with IBM, Centre for Intellectual Property Rights (IPR), Centre for Advanced Research & Development (CARD), Centre for Multimedia Research, Centre for Transfer of Technology, Centre of Excellence in Constitutional Law and Centre of Excellence in MAT Lab.

Our Vision

To make the Institute an epitome of excellence in higher education by providing high-quality education and rigorous training in multiple streams of choice with ample scope for all-round development for the betterment of society.

Our Mission

- Effectively **imparting knowledge and** inculcating innovative **thinking**
- Facilitating **skill enhancement** through add-on courses and **hands-on training.**
- Doing original, socially relevant, **high-quality research.**
- Facilitating appropriate co-curricular, extracurricular and extension activities
- Instilling the spirit of **integrity, equity,** professional **ethics** and social **harmony.**

The structure of Governance in VISTAS facilitates Autonomy, Transparency and Accountability through the participation of various stakeholders. It provides the differentiation and integration of various activities in VISTAS. The Organizational structure has been designed as per UGC Regulation. The Regulatory bodies of VISTAS include the Board of Management, Academic Council, Planning and Monitoring Board, Board of Studies and Finance committee. They have been functioning as per guidelines of UGC and Memorandum of Association and they meet periodically. The various key stakeholders of VISTAS, which include faculty, students, parents, industry experts, academic peers and alumni, are involved in decision making at every level. For smooth functioning of VISTAS, several sub-committees comprising the faculty and student representatives have been constituted. In order to decentralize administrative/academic machinery, the authority has been delegated by setting up of Deans for various Schools, Admissions, Academics, Research, Student Affairs, Faculty, IQAC, etc., For transparent functioning, the Admission, Academics, Administration, Accounts and Examination processes are automated by using ERP.

An enriched teaching, learning and evaluation process is carried out in VISTAS catering to the diversity of students and faculty. Students entering VISTAS enjoy a multivariate learning process. Bridge Courses are conducted to prepare the students for their respective study environments. The entire Teaching-Learning process is student-centric focusing on LMS, KMS, and E-Learning resources. Interactive and instructional lectures, focused discussions, classroom deliberations, practical classes, hands-on training, projects, presentations, workshops and guest lectures help students to hone their technical skills. Comprehensive lesson plans are prepared regularly by faculties for effective teaching. Independent, Interactive, Collaborative and Participatory learning is encouraged and the required facilities are available for students in terms of SMART Classrooms, Wi-Fi-enabled Campus, Industrial Interactions, Projects and visits. Video lectures of VISTAS were recorded using EduTech, NPTEL, EDX and other MOOCs to enhance student learning. Virtual learning through the AVIEW and Moodle programs of IIT are available. VISTAS employ an effective Mentor-Mentee system for guidance and counselling students on regular basis. Class committee meetings are conducted regularly for all types of learners. Remedial and tutorial classes are conducted for slow learners to enhance their learning. Fast learners are involved in NPTEL courses, industrial problems and projects. All the programs offered by VISTAS have clearly defined POs, PSOs and COs and the outcomes are assessed through direct and indirect methods. VISTAS adopt a Continuous Assessment System, where both formative and summative assessments are ensured to measure the attainment of course outcomes.

VISTAS core values are aligned with its vision and mission and are reflected in the curricular and professional growth of the VISTAS community. With Equity as its premier value and a Women's Forum as its mouthpiece, VISTAS promote gender sensitivity among all stakeholders. Girls are given special counselling to overcome depression, abnormal behaviour etc. VISTAS have a well-defined Environment policy. The campus is green, serene and pleasant. Steps have also been taken to conserve energy and reduce carbon footprint by installing three windmills and solar street lamps. VISTAS has been adhering to the best practices such as Herbal Garden, Tobacco-Free Campus, Green Campus, Bio-gas plant, Rain Water Harvesting, Renewable energy and carbon neutrality. The E-waste is again sold back to the contractors for disposal. Recently a modern waste processing machine has been installed on the

campus, for converting biodegradable waste into manure. Being situated in the heart of the city, VISTAS enjoys the privilege of creating direct and indirect employment opportunities for the local unemployed youth. Good connectivity and the presence of industries in the vicinity are major advantages. The core values and the developments stated above are displayed on the Institute's website. Promoting a cosmopolitan culture, VISTAS observes National festivals and birth/death anniversaries of great Indian personalities.

VISTAS follows the Best practices such as Outcome Based Education, Student Mentoring, External Academic and Administration Audit, ERP in all the activities, NSS Unit-Swachh Bharat Abhiyan, Student's Feedback about Teachers, MHRD Digital Initiatives, Research culture, Institution-Industry Interaction, Use of Renewable Energy, Internship for Students, Parent Corner in the Website etc. The Industry-Institution relationship is very strong at VISTAS. Industries are busy developing products at the Incubation Centre. Some academic programs such as B. Tech and MBA are run in collaboration with M/s IBM. Experienced Professors are active in solving industrial problems as part of consultancy projects. Our vision is to provide quality education. Hence, as part of ensuring quality, an External Academic and Administrative Audit is performed in all the departments every year.

A centre, named, "Centre for Advanced Research and Development (CARD)" has been established to promote research. Besides 12 advanced dedicated research labs in various schools, a Central Instrumentation lab is set up housing advanced instruments such as BET Surface Area Analyzer, Field Emission Scanning Electron Microscope, High-Performance Thin-Layer Chromatography, X-Ray Diffractometer, Particle Size and Zeta Potential Analyzer, Raman Spectrometer, etc. Research scholars from nearby universities also use the VISTAS lab for research. Due to strong Industry – Institutional tie-up, senior faculty are busy solving industrial problems as consultancy projects. Ten industries are active at Incubation Centre in developing products useful to the society. Staff members are given incentives to publish papers and attend seminars. During the last three years, 1374 research papers have been published in the UGC listed journals. *Turnitin* software is available to eliminate plagiarism.

Under the Unnat Bharath Abhiyan program, VISTAS has initiated the promotion of institutional social responsibility through activities undertaken in the neighbourhood rural community. Generic Medicines are made available to the Society through Pradhan Mantri Jan-Aushadhi Yojana Scheme.

The road map of VISTAS is well-drawn. Our vision is to make this an International Institute wherein students from all the countries will assemble to enrich themselves in terms of knowledge. We want to provide physical and academic infrastructure including lab facilities which will create a “reverse flow” of students. Our ambition is to have at least 100 crores worth of research projects by 2030.

Several are the paths and avenues to be explored and exploited. Countless are the feathers to be added to the Vels cap of success. The endeavours continue with determination, “to strive, to seek, to find and not to yield”. On the whole, the Institute is committed to excellence in every activity, intelligent planning of each activity and ensuring focused effect on each of them for attaining excellence. **WE HAVE ACHIEVED A LOT, STILL, WE FEEL WE HAVE MILES TO GO AND OUR JOURNEY IN HIGHER EDUCATION CONTINUES...**

Section 3: General Information

S. No	Description (2022-23)	Male	Female
1	Students	10126	3720
2	Teaching Staff	420	414
3	Non-Teaching Staff	255	246
4	Total	10,801	4,380

Students	Male	Female	Total
Total UG Students	8674	3055	11729
Total PG Students	1452	665	2117
No. of Students	10126	3720	13846

Number of Students - School wise

S. No	Name of the School	Male	Female	Total
1	School of Management Studies & Commerce	2503	781	3284
2	School of Computing Sciences	1860	403	2263
3	School of Life Sciences	258	307	565
4	School of Mass Communication	472	67	539
5	School of Maritime Studies	505	15	520
6	School of Engineering	1862	304	2166
7	School of Basic Sciences	105	85	190
8	School of Hotel & Catering Mgmt.	132	22	154
9	School of Pharmaceutical Sciences	395	250	645
10	School of Physiotherapy	189	322	511
11	School of Ocean Engineering	103	7	110
12	School of Law	1273	581	1854
13	School of Languages	52	65	117
14	School of Education	26	207	233
15	School of Music & Fine Arts	29	21	50
16	School of Ancient Indian Studies	43	65	108
17	School of Agriculture	21	12	33
18	Vel Nursing College	85	115	200
19	Dept. of Aviation	213	91	304
	Total	10126	3720	13846

Teaching Staff

Teaching Staff	Male	Female	Total
Number of Teaching Staff	420	414	834

School wise

S. No	Name of the School	Male	Female	Total
1	School of Management Studies & Commerce	82	76	158
2	School of Computing Sciences	28	58	86
3	School of Life Sciences	25	21	46
4	School of Mass Communication	21	9	30
5	School of Maritime Studies	31	6	37
6	School of Engineering	116	66	182
7	School of Basic Sciences	13	15	28
8	School of Hotel & Catering Mgmt.	10	3	13
9	School of Pharmaceutical Sciences	18	29	47
10	School of Physiotherapy	13	16	29
11	School of Ocean Engineering	11	5	16
12	School of Law	20	35	55
13	School of Languages	8	21	29
14	School of Education	7	17	24
15	School of Music & Fine Arts	2	4	6
16	School of Ancient Indian Studies	2	4	6
17	School of Agriculture	5	3	8
18	Vel Nursing College	-	23	23
19	Dept. of Aviation	8	3	11
	Total	420	414	834

Non-Teaching Staff

Non-Teaching Staff	Male	Female	Total
Number of Non-Teaching Staff	255	246	501

Category	Male	Female	Total
Category –A	15	6	21
Category –B	60	25	85
Category – C	63	43	106
Category – D	88	60	148
Library	11	4	15
House Keeping & Security	18	108	126
Total	255	246	501

Section 4: Facilities Available

- Boys Hostels
- Girls Hostels
- Staff Quarters
- Three air-conditioned auditoria with a capacity of 1200, 250 & 120
- Three air-conditioned seminar halls with a seating capacity of 150
- Main Canteen is available which can cater to 200 persons at a time and Three smaller canteens are also available
- Bank with ATM
- Pharmacy
- RO Plant
- Transport facilities
- Nine Diesel Generators
- Three Wind Mills
- Waste Management
- Solar Plant
- Insurance for all students and staff members

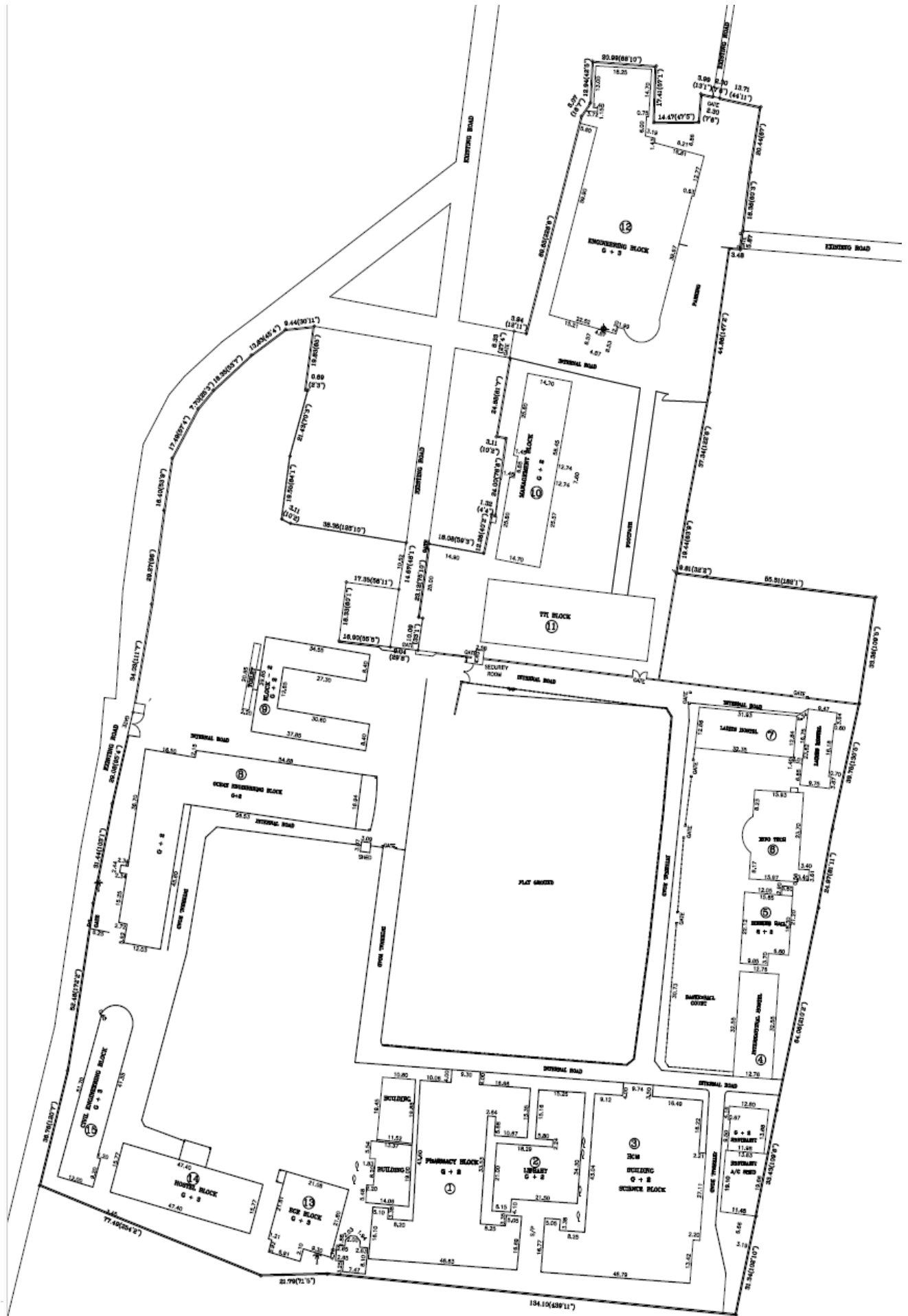
VISTAS have three playgrounds and other facilities such as:

- Football Field
- Volleyball Court
- Basketball Court
- Ball Badminton Court
- Badminton Courts (Outdoor)
- Throwball Court
- Tennikoit Court
- Taekwondo
- Cricket Practice Pitch (nets)
- Kabaddi Court
- Swimming Pool (25mtsX14 mts)

Facilities Available

- 200 Mtrs Track
- Fitness Centre (gymnasium)
- Indoor hall to play Table Tennis, Carrom and Chess
- All the Fire Safety Equipment are provided on the premises
- Having necessary Wheel Chairs and Ramps in all the buildings on the campus.
- The institution is having adequate toilet facilities for physically challenged persons.
- Lift facilities are available
- All members of staff (Teaching, Non-teaching & Students) are covered through accident cum hospitalization insurance.
- Two separate Health Clinics are available - One for Boys and One for Girls.
- One Male Medical Officer and One lady Medical Officer are available.
- Tie-up with nearby hospitals namely Kamatchi Hospital, and Parvathy Hospital.
- Apollo Shine Clinic is located within the campus.
- 24 Hrs Ambulance facility
- Nursing Assistants

Section 5: Layout



Section 6: Vision, Mission and Core Values

Vision

- To make the Institute an epitome of excellence in higher education by providing high-quality education and rigorous training in multiple streams of choice with ample scope for all-round development for the betterment of society.

Mission

- Effectively **imparting knowledge** and inculcating **innovative thinking**.
- Facilitating **skill enhancement** through add on courses and **hands-on training**.
- Doing original, socially relevant, **high-quality research**.
- Facilitating appropriate **co-curricular, extracurricular and extension activities**.
- Instilling the **spirit of integrity, equity, professional ethics and social harmony**.

Core Values

VISTAS believe that:

- VISTAS students and scholars should be well-founded on the pursuit of knowledge through, teaching and learning research, with fellowships required based on intellectual merit, ability and the potential for excellence.
- Perspectives, arising from diverse knowledge backgrounds, that redefine our identities, deepen scholarly inquiry and enrich path-breaking newer knowledge horizons.
- Cherish the key values of academic freedom, creative and innovative thought, ethical standards and integrity, accountability and social justice, and nurturing an open mind and open society.
- Foster inquiry-led and evidence-based approach to creative knowledge; facilitate a vibrant academic ambience to nurture the intellectual climate.

Section 7: Management's Commitment

The Management of the VISTAS has shown a commitment to green auditing during the audit meeting. They were ready to encourage all green activities. It was decided to promote all activities that are environmentally friendly such as awareness programs on the environment, campus farming, planting more trees on the campus etc., after the green auditing. The management of the University was willing to improve policies based on the green auditing report.

Section 8: Scope and Goals of Green Auditing

A clean and healthy environment aids effective learning and provides a conducive learning environment. There are various efforts around the world to address environmental education issues. Green Audit is the most efficient and ecological way to manage environmental problems. It is a kind of professional care that is the responsibility of each individual who is part of economic, financial, social, and environmental factors. It is necessary to conduct the green audit on the University campus because students become aware of the green audit, its advantages to saving the planet and they become good citizens of our country. Hence, a Green audit becomes necessary at the university level.

Section 9: Benefits of the Green Auditing

- More efficient resource management
- To provide a basis for improved sustainability
- To create a green campus
- To enable waste management through reduction of waste generation, solid-waste and water recycling
- To create a plastic-free campus and evolve health consciousness among the stakeholders
- Recognize the cost-saving methods through waste minimizing and managing
- Point out the prevailing and forthcoming complications
- Authenticate conformity with the implemented laws
- Empower the organizations to frame a better environmental performance
- Enhance the alertness to environmental guidelines and duties
- Impart environmental education through a systematic environmental management approach and Improve environmental standards
- Benchmarking for environmental protection initiatives
- Financial savings through a reduction in resource use
- Development of ownership, personal and social responsibility for the University and its environment
- Enhancement of University profile
- Developing an environmental ethic and value systems in youngsters.
- Green auditing should become a valuable tool in the management and monitoring of environmental and sustainable development programs of the University.

Section 10: Target Areas of Green Auditing

Green audit forms part of a resource management process. Although they are individual events, the real value of green audits is the fact that they are carried out, at defined intervals, and their results can illustrate improvement or change over time. Eco-campus concept mainly focuses on the efficient use of energy and water; minimising waste generation or pollution and also economic efficiency. All these indicators are assessed in process of “Green Auditing of the educational institute”. Eco-campus focuses on the reduction of contribution to emissions, procuring a cost-effective and secure supply of energy, encouraging and enhancing energy use conservation, promoting personal action, reducing the institute’s energy and water consumption, reducing wastes to landfill, and integrating environmental considerations into all contracts and services considered to have significant environmental impacts. Target areas included in this green auditing are water, energy, waste, and Environment.

Section 11: Methodology of Green Auditing

The purpose of the audit was to ensure that the practices followed on the campus are by the Green Policy adopted by the institution. The criteria, methods and recommendations used in the audit were based on the identified risks. The methodology includes: preparation and filling up of questionnaire, physical inspection of the campus, observation and review of the document, interviewing responsible persons and data analysis, measurements and recommendations. The methodology adopted for this audit was a three-step process comprising of:

1. Data Collection – In the preliminary data collection phase, exhaustive data collection was performed using different tools such as observation, surveys communicating with responsible persons and measurements.

The following steps were taken for data collection:

- Site Visit
 - Data about the general information was collected by observation and interview.
 - The power consumption of appliances was recorded by taking an average value in some cases.
2. Data Analysis - Detailed analysis of data collected includes calculation of energy consumption, analysis of latest electricity bill of the campus, Water consumption, Waste Generation and Greenery Management.
 3. Recommendation – Based on the results of data analysis and observations, some steps for reducing power and water consumption were recommended. Proper treatments for waste were also suggested. The use of fossil fuels has to be reduced for the sake of community health.

The above target areas particular to the University were evaluated through a questionnaire circulated among the students for data collection.

The following data was collected for the following areas during the assessment.

1. Environment & Waste Management
2. Energy Management
3. Water Management

Section 12: Auditing for Energy Management

Energy cannot be seen, but we know it is there because we can see its effects in the forms of heat, light and power. This indicator addresses energy consumption, energy sources, energy monitoring, lighting, appliances, and vehicles. Energy use is an important aspect of campus sustainability and thus requires no explanation for its inclusion in the assessment. An old incandescent bulb uses approximately 60W to 100W while an energy-efficient light-emitting diode (LED) uses only less than 10 W. Energy auditing deals with the conservation and methods to reduce its consumption related to environmental degradation. It is therefore essential that any environmentally responsible institution examine its energy use practices.

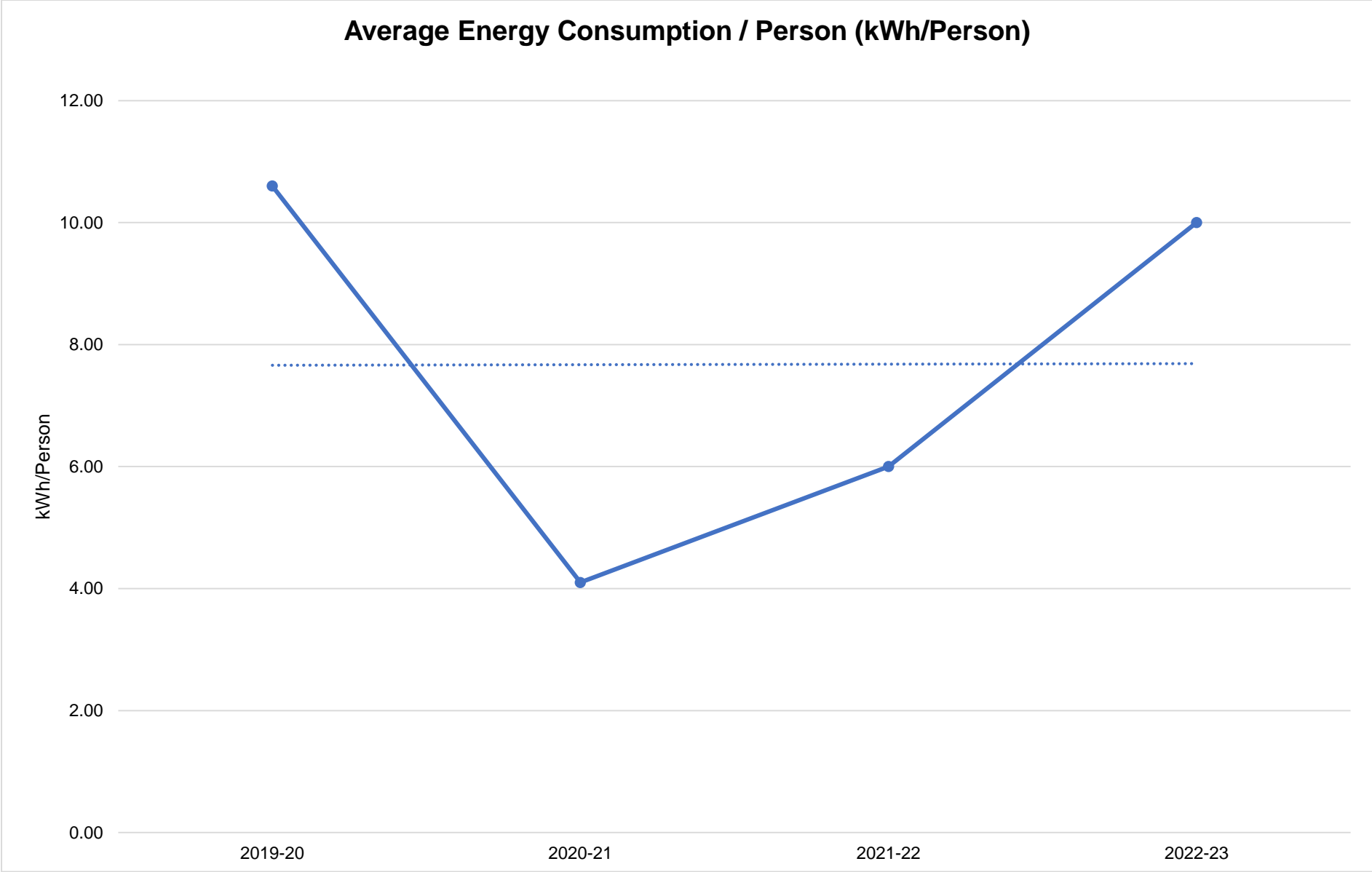
Energy Consumption Data

S. No	Description	Apr-22	May-22	Jun-22	Jul-22	Aug-22	Sep-22	Oct-22	Nov-22	Dec-22	Jan-23	Feb-23	Mar-23
1	Electricity Consumption (588)	88617	91899	78240	69333	89994	99276	86400	85389	72745	92280	102160	102160
2	Electricity Consumption (797)	78677	90122	77645	54922	65270	72615	57262	66892	39490	42065	55745	55745
3	Energy Generated from Windmill (588)	9315	64874	67704	63534	62355	60349	55483	32452	46679	54786	36245	36245
4	Energy Generated from Windmill (797)	5621	44680	44669	35970	34284	44565	17293	14784	6487	4414	4442	4442
5	Diesel Consumption	411	202	750	960	850	445	316	231	791	310	375	610
6	Energy Generated from DG (in Units)	477	253	1283	2095	687	655	577	85	640	26	153	112
7	Energy Consumption	167294	182021	155885	124255	155264	171891	143662	152281	112235	134345	157905	157905
8	No of Persons (Students & Staff)	15181	15181	15181	15181	15181	15181	15181	15181	15181	15181	15181	15181

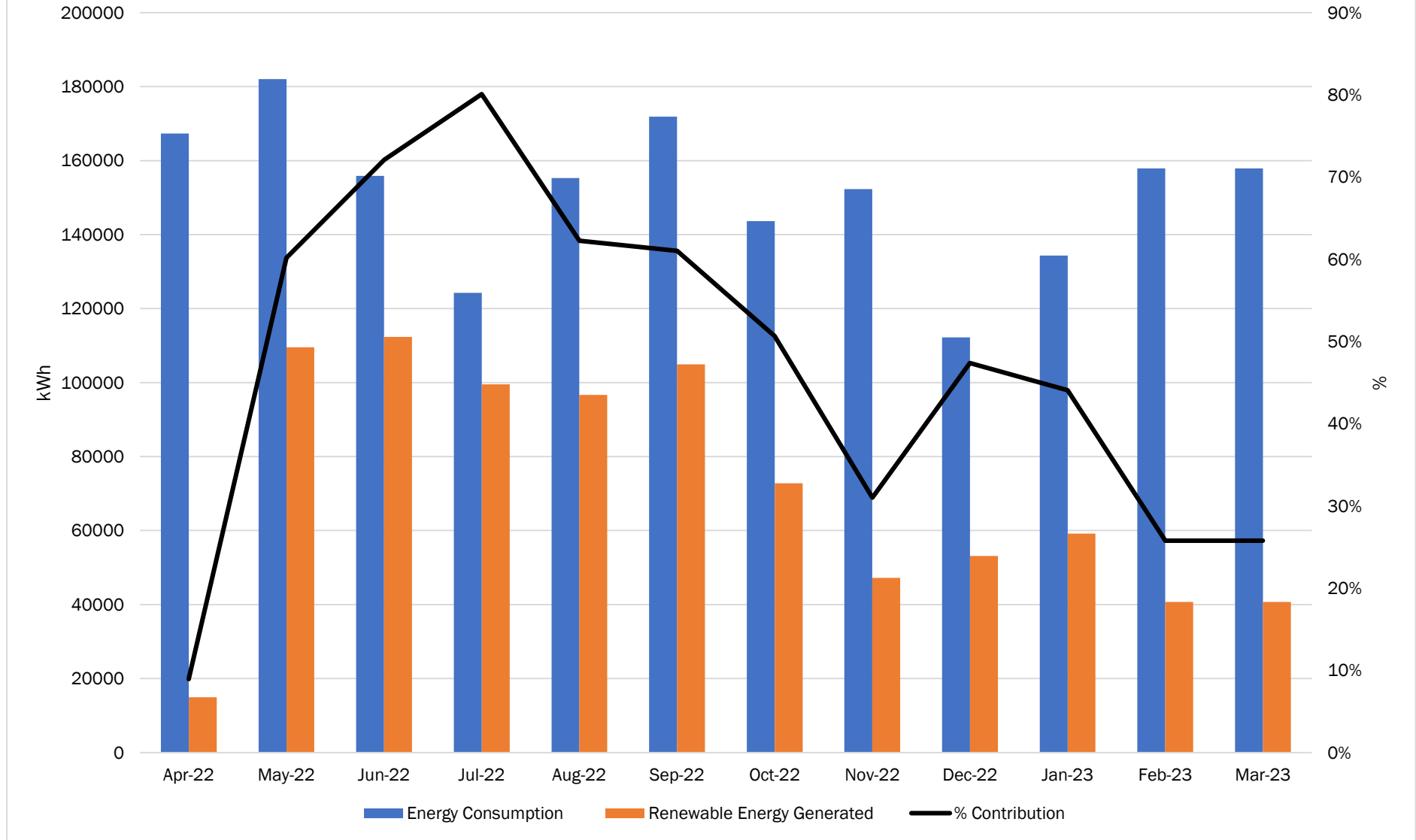
Energy Consumption Data

S. No	Description	Apr-22	May-22	Jun-22	Jul-22	Aug-22	Sep-22	Oct-22	Nov-22	Dec-22	Jan-23	Feb-23	Mar-23
9	Energy Consumption per Person	11.0	12.0	10.3	8.2	10.2	11.3	9.5	10.0	7.4	8.8	10.4	10.4
10	Renewable Energy Generated	14936	109554	112373	99504	96639	104914	72776	47236	53166	59200	40687	40687
11	% of Renewable Energy Generated Vs Consumption	9%	60%	72%	80%	62%	61%	51%	31%	47%	44%	26%	26%
12	Specific Consumption of Diesel	1.16	1.25	1.71	2.18	0.81	1.47	1.83	0.37	0.81	0.08	0.41	0.18

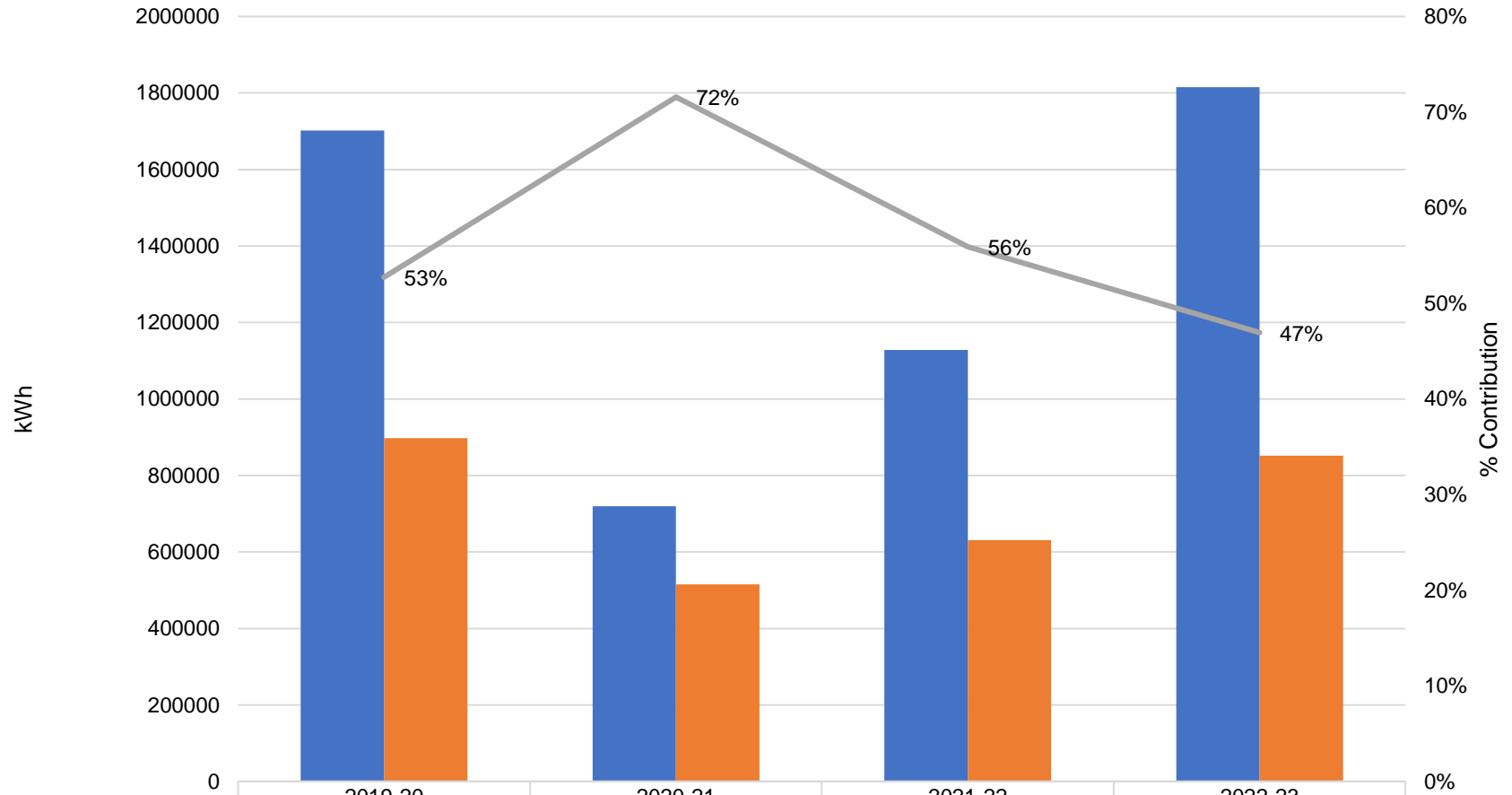
Average Energy Consumption / Person (kWh/Person)



Renewable Energy Generated (2022-23)



EB Consumption, Renewable Energy Generation and Its Contribution



Total EB Consumption	1701965	719665	1127977	1814943
Total Windmill Generation	897806	515146	630862	851672.0
% Contribution	53%	72%	56%	47%

■ Total EB Consumption
 ■ Total Windmill Generation
 — % Contribution

Electrical Equipment in the University and its Energy Consumption

VAELS EDUCATIONAL TRUST - 588						
Equipments		Qty	Watts/unit	Watts	KW	kWh/Day
Ladies Hostel-1						
1	Tube Light	200	20	4000	4	28.00
2	48" Ceiling Fan	140	70	9800	9.8	68.60
3	Exhaust Fan	36	50	1800	1.8	10.80
4	Water Heater(2.7kw)	1	2700	2700	2.7	10.80
5	Water Cooler(1.2KW)	2	1200	2400	2.4	7.20
6	Submersible Motor(2.2KW)	1	2238	2238	2.238	6.71
7	Sump Motor(2.2KW)	1	2238	2238	2.238	6.71
Mess-1 Block						
1	Tube Light	110	40	4400	4.4	44.00
2	48" Ceiling Fan	94	75	7050	7.05	84.60
3	Exhaust Fan	10	70	700	0.7	5.60
4	Lift(5.6KW)	1	5600	5600	5.6	22.40
5	Water Cooler(1.2KW)	2	1200	2400	2.4	57.60
6	Grinder	4	200	800	0.8	6.40
7	Deep Freezer(1kw)	1	1000	1000	1	24.00
8	Refrigerator	1	800	800	0.8	19.20
9	Hot Air Oven(2KW)	1	2000	2000	2	16.00
10	Insect Killer Machine	1	40	40	0.04	0.96
11	Mixie(0.75KW)	2	750	1500	1.5	12.00
12	Self-Priming Motor(0.75KW)	1	750	750	0.75	6.00
13	Open Well Motor(2.23KW)	1	2238	2238	2.238	13.43
Ladies Hostel-2						
1	Tube Light	126	40	5040	5.04	60.48
2	48" Ceiling Fan	98	75	7350	7.35	88.20
3	Exhaust Fan	12	100	1200	1.2	12.00
4	Air Conditioner(2.25kw)	7	2250	15750	15.75	126.00
5	Water Heater(3kw)	1	3000	3000	3	24.00
6	Water Cooler(1.75KW)	1	1750	1750	1.75	42.00
7	Submersible Motor(2.23)	1	2238	2238	2.238	13.43
8	Feed Pump(2.23KW)	1	2238	2238	2.238	13.43
Stores Block						
1	Tube Light	40	40	1600	1.6	19.20
2	2x2 PI Lamp	31	15	465	0.465	4.65
3	48" Ceiling Fan	35	70	2450	2.45	29.40
4	Exhaust Fan	6	70	420	0.42	4.20
5	Air Conditioner(1.5kw)	7	1500	10500	10.5	63.00
6	Deep Freezer	2	800	1600	1.6	38.40
7	Computer	27	250	6750	6.75	67.50

VAELS EDUCATIONAL TRUST - 588						
Equipments		Qty	Watts/unit	Watts	KW	kWh/Day
8	Printer	1	150	150	0.15	0.75
9	Water cooler(1.5KW)	1	1500	1500	1.5	36.00
HCM						
1	Tube Light	120	40	4800	4.8	38.40
2	2X2 Light	25	30	750	0.75	6.00
3	48" Ceiling Fan	70	75	5250	5.25	42.00
4	Exhaust Fan	30	70	2100	2.1	16.80
5	Air Conditioner(1.5kw)	8	1500	12000	12	96.00
6	Deep Freezer	3	800	2400	2.4	57.60
7	Computer	8	200	1600	1.6	12.80
8	Projector	5	80	400	0.4	2.00
9	Printer	1	80	80	0.08	0.40
10	Deck Bakery Oven(2.5KW)	6	2500	15000	15	75.00
11	Spot Light	19	35	665	0.665	1.33
12	Heavy Duty Grinder	3	1200	3600	3.6	14.40
13	Refrigerator	3	800	2400	2.4	57.60
14	Water Cooler(1.5KW)	3	1500	4500	4.5	108.00
15	Water Motor(3kw)	3	3000	9000	9	36.00
16	Micro Oven	8	1800	14400	14.4	57.60
17	Hot Air Oven	1	800	800	0.8	1.60
18	Submersible Motor(2.23KW)	1	2238	2238	2.238	8.95
19	Sump Motor(2.23KW)	1	2238	2238	2.238	8.95
20	Sewage Motor(2.42KW)	2	2424	4848	4.848	19.39
Science						
1	Tube Light	390	40	15600	15.6	109.20
2	48" Ceiling Fan	220	75	16500	16.5	165.00
3	Exhaust Fan	20	50	1000	1	8.00
4	Copier	3	800	2400	2.4	12.00
5	Printer	18	100	1800	1.8	7.20
6	Incubator	7	200	1400	1.4	21.00
7	Centrifuge	31	80	2480	2.48	12.40
8	Refrigerator	8	800	6400	6.4	153.60
9	Deep Freezer	5	1000	5000	5	120.00
10	Hot Air Oven	6	1800	10800	10.8	54.00
11	Air Conditioner(1.8KW)	18	1800	32400	32.4	388.80
12	Computers	160	250	40000	40	240.00
13	Water Cooler(1.5KW)	4	1500	6000	6	48.00
14	Analog Calorimeter	5	500	2500	2.5	10.00
15	Auto Analyser	1	500	500	0.5	2.00
16	Auto Clave	4	500	2000	2	48.00
17	Microscope	4	50	200	0.2	0.80
18	Digital Calorimeter	16	750	12000	12	36.00

VAELS EDUCATIONAL TRUST - 588						
Equipments		Qty	Watts/unit	Watts	KW	kWh/Day
19	Balance Weighing Machine	6	100	600	0.6	1.20
20	Homogeniser	3	250	750	0.75	2.25
21	Heating Mantle	7	500	3500	3.5	7.00
22	Hemo Cyclometer	5	100	500	0.5	1.00
23	Laminar Air Flow Machine(1KW)	4	1000	4000	4	8.00
24	Magnetic Stirrer	4	150	600	0.6	1.20
25	PH Meter	12	350	4200	4.2	8.40
26	Rotary Shaker	4	750	3000	3	6.00
27	UV Spectro Photometer	1	750	750	0.75	1.50
28	Vacuum Pump(2KW)	6	2000	12000	12	24.00
29	Vortex Mixer	6	450	2700	2.7	5.40
30	Water Bath	3	200	600	0.6	1.20
31	Cooling Incubator(1.5KW)	2	1500	3000	3	6.00
32	Shaker Incubator(1.5KW)	1	1500	1500	1.5	3.00
33	Micro Wave Oven	4	800	3200	3.2	6.40
34	Rotor Vapour	2	250	500	0.5	1.00
35	RO Plant	1	750	750	0.75	1.50
36	Elisa Reader	1	150	150	0.15	0.30
37	PCR	1	200	200	0.2	0.40
38	UV Transilluminator	1	550	550	0.55	1.10
39	UV-Vis_ Transilluminator	1	200	200	0.2	0.40
40	Bunsen Burner	4	150	600	0.6	1.20
41	Cyclic Voltammeter	1	150	150	0.15	0.30
42	Single Pan Analytical Balance	1	120	120	0.12	0.24
43	Electronic Analytical Balancer	5	40	200	0.2	0.40
44	Fume Exhaust hood	2	200	400	0.4	0.80
45	Hot Plate	1	400	400	0.4	0.80
46	Over Head Projector	1	80	80	0.08	0.16
47	Polarimeter	3	200	600	0.6	1.20
48	Refractometer	2	400	800	0.8	1.60
49	Thermostat Digital Control Stirrer	1	400	400	0.4	0.80
50	Western Cadmium Coil	1	250	250	0.25	0.50
51	UPS				0	0.00
52	Projector	12	100	1200	1.2	2.40
53	TV	4	160	640	0.64	1.28
54	Speaker	8	20	160	0.16	0.32
Library Building						
1	Tube Light	80	40	3200	3.2	25.60
2	1x1 LED	140	25	3500	3.5	28.00

VAELS EDUCATIONAL TRUST - 588

Equipments		Qty	Watts/unit	Watts	KW	kWh/Day
3	48" Ceiling Fan	90	70	6300	6.3	50.40
4	Projector	3	100	300	0.3	0.90
5	Computers	120	270	32400	32.4	259.20
6	Printer	8	100	800	0.8	6.40
7	Xerox	1	1000	1000	1	8.00
8	Exhaust Fan	8	70	560	0.56	4.48
10	Speaker	5	20	100	0.1	0.80
11	Air Conditioner(1.8KW)	28	1800	50400	50.4	403.20
12	Spot Light	15	25	375	0.375	3.00
13	Water Cooler(1.5KW)	2	1500	3000	3	24.00
14	TV	1	180	180	0.18	1.44
Pharmacy						
1	Tube Light	450	40	18000	18	144.00
2	48" Ceiling Fan	200	75	15000	15	120.00
3	12" Exhaust Fan	32	70	2240	2.24	17.92
4	Copier	3	800	2400	2.4	9.60
5	Printer	6	100	600	0.6	2.40
6	Air Conditioner(1.55KW)	18	1550	27900	27.9	223.20
7	Projector	11	200	2200	2.2	2.20
8	Computers	80	200	16000	16	96.00
9	Water Cooler(1.5KW)	4	1500	6000	6	48.00
10	Incubator	3	200	600	0.6	9.00
11	Fume Cup Board	1	200	200	0.2	1.60
12	Double Cone Blender	1	746	746	0.746	5.97
13	Dry Granulator	1	1200	1200	1.2	12.00
14	Hot Air Oven(1.5KW)	1	1500	1500	1.5	12.00
15	Air Compressor(1.2kw)	1	1200	1200	1.2	9.60
16	Angle Polishing Pen	1	800	800	0.8	6.40
17	Stability Chamber	2	1000	2000	2	48.00
18	Cooling Centrifuge	1	100	100	0.1	0.80
19	Tableting Machine(Single Punch)	1	2250	2250	2.25	13.50
20	Rotary Tablet Punching Machine	1	2250	2250	2.25	9.00
21	Orbital Incubator Shaker	2	160	320	0.32	0.64
22	Tray Dryer	2	900	1800	1.8	10.80
23	Filter Press(7.85KW)	1	7850	7850	7.85	15.70
24	Tv	4	130	520	0.52	0.52
25	Speaker	10	20	200	0.2	0.20
26	Air Flow Chamber	1	250	250	0.25	1.00
27	Auto Try Box	1	50	50	0.05	0.20
28	Casette AC(2.25KW)	3	2250	6750	6.75	27.00
29	Photo Calorimeter Digital	1	400	400	0.4	1.60

VAELS EDUCATIONAL TRUST - 588

Equipments		Qty	Watts/unit	Watts	KW	kWh/Day
30	PH Meter Digital	2	150	300	0.3	0.60
31	Magnetic Stirrer	1	250	250	0.25	0.75
32	Lab Digital Balance	15	100	1500	1.5	9.00
33	Motorized Analytical Balancer	1	70	70	0.07	0.28
34	GC Purification Panel	3	450	1350	1.35	8.10
35	UV VIS Spectro Photometer	4	250	1000	1	6.00
36	Electronic Weighing Scale	5	800	4000	4	24.00
37	Vacuum Pump(1.8KW)	2	1800	3600	3.6	21.60
38	Over Head Projector	4	100	400	0.4	2.40
39	Lc-2010 Cht Ind	2	150	300	0.3	1.80
40	Gas Purification Panel	1	750	750	0.75	4.50
41	Digital Calorimeter	1	100	100	0.1	0.60
42	Centrifuge	6	100	600	0.6	3.60
43	Digital Photo Calorimeter	1	100	100	0.1	0.60
44	Micro Plate Reader	1	100	100	0.1	0.60
45	Melting Point Apparatus	4	850	3400	3.4	20.40
46	Orbital Shaker	1	750	750	0.75	4.50
47	Water Bath Shaker	1	750	750	0.75	4.50
48	Micro Centrifuge	1	100	100	0.1	0.60
49	FTIR System	1	250	250	0.25	1.50
50	Alpha T Spectrometer	1	500	500	0.5	3.00
51	Auto Clave	1	200	200	0.2	1.20
52	Freeze Dryer(1.8KW)	1	1800	1800	1.8	10.80
53	Ampoule Washing Machine	1	1200	1200	1.2	7.20
54	Filling and Sealing Machine	1	1200	1200	1.2	7.20
55	Bottle Sealing Machine	1	550	550	0.55	3.30
56	Liquid Filling Machine	1	275	275	0.275	1.65
57	Electronic Weighing Balancer	1	250	250	0.25	1.50
58	Limit Test Apparatus	1	1250	1250	1.25	7.50
59	Suction Pump(1.5KW)	1	1500	1500	1.5	9.00
60	Plate Auto Enclave	1	750	750	0.75	4.50
61	Elisa Reader	1	200	200	0.2	1.20
62	GPS Imaging System	1	1250	1250	1.25	7.50
63	Refrigerator	10	800	8000	8	48.00
64	Xerox	1	1000	1000	1	6.00
65	Autoclave	1	1000	1000	1	6.00
66	Camera Lucifer	3	7500	22500	22.5	135.00
67	Calorie Counter	1	500	500	0.5	3.00
68	Dissection Microscope	5	250	1250	1.25	7.50
69	Electronic Double Well Water Bath	2	750	1500	1.5	9.00
70	Hair Dryer	2	1000	2000	2	12.00

VAELS EDUCATIONAL TRUST - 588

Equipments		Qty	Watts/unit	Watts	KW	kWh/Day
71	Heating Mantle(2KW)	18	2000	36000	36	216.00
72	Hot Plate	2	1000	2000	2	12.00
73	Mixer	1	350	350	0.35	2.10
74	Muffle Furnace	1	1000	1000	1	6.00
75	PH Meter Digital	2	200	400	0.4	2.40
76	Refractometer	2	300	600	0.6	3.60
77	Extractor Mantle	2	1250	2500	2.5	15.00
78	LCD Projector Model	1	750	750	0.75	4.50
79	UV Chamber	1	1000	1000	1	6.00
80	Orbital Shaker Incubator (1KW)	2	1000	2000	2	12.00
81	Digital Electronic Balancer	2	500	1000	1	6.00
Guest House						
1	Tube Light	20	40	800	0.8	4.80
2	2x2 Led	130	36	4680	4.68	28.08
3	Fan	12	75	900	0.9	5.40
4	Computers	6	250	1500	1.5	9.00
5	Printer	2	100	200	0.2	1.20
6	Xerox	1	1000	1000	1	6.00
7	Exhaust Fan	12	70	840	0.84	5.04
8	Water Heater(1.5kw)	2	1500	3000	3	18.00
9	Speaker	4	20	80	0.08	0.48
10	Air Conditioner(2KW)	20	2000	40000	40	240.00
11	Spot Light	6	25	150	0.15	0.90
12	Water Cooler	2	1500	3000	3	18.00
13	TV	3	160	480	0.48	2.88
14	Lift(5.6KW)	1	5600	5600	5.6	33.60
15	Borewell Motor(2.22KW)	1	2228	2228	2.228	6.68
16	Sump Motor(2.22KW)	2	2228	4456	4.456	13.37
17	Sewage Motor(5.6KW)	3	5600	16800	16.8	50.40
Incubation Lab						
1	1X1 LED	100	26	2600	2.6	15.60
2	2X2 LED	40	36	1440	1.44	8.64
3	Fan	2	75	150	0.15	0.90
4	Computers	30	300	9000	9	54.00
5	Printer	1	100	100	0.1	0.60
6	Air Conditioner(2.5KW)	25	2500	62500	62.5	375.00
7	Coundangel Meter	1	950	950	0.95	5.70
8	Electro Chemical Workspace	1	500	500	0.5	3.00
9	RTPCR	1	900	900	0.9	5.40
10	DSE`	1	750	750	0.75	4.50
11	TGA	1	1000	1000	1	6.00

VAELS EDUCATIONAL TRUST - 588

Equipments		Qty	Watts/unit	Watts	KW	kWh/Day
12	Semi Micro Balance	1	150	150	0.15	0.90
13	HPTLC	1	1500	1500	1.5	9.00
14	FTART	1	1200	1200	1.2	7.20
15	UV Visible Spectro Meter	1	1500	1500	1.5	9.00
16	PH meter	3	250	750	0.75	4.50
17	sonic reactor	1	1500	1500	1.5	9.00
18	hot air oven	1	1750	1750	1.75	10.50
19	double distillation water unit	1	950	950	0.95	5.70
20	XRD	1	1150	1150	1.15	6.90
21	Deep Freezer 1	1	1500	1500	1.5	9.00
22	FESEM	1	1750	1750	1.75	10.50
23	Confocal Roman Spectrum	1	1200	1200	1.2	7.20
24	BET surface area analysis	1	1500	1500	1.5	9.00
25	DFS	1	1000	1000	1	6.00
26	AFM	1	1200	1200	1.2	7.20
27	Chiller	3	1000	3000	3	18.00
Mess II Block						
1	Tube Light	130	40	5200	5.2	41.60
2	48" Ceiling Fan	94	75	7050	7.05	56.40
3	Exhaust Fan	12	70	840	0.84	5.04
4	Air Conditioner(2.5kw)	10	2500	25000	25	200.00
5	Water Cooler(1.5KW)	2	1500	3000	3	24.00
6	Printer	2	100	200	0.2	0.60
7	Sump Motor(2.23KW)	1	2230	2230	2.23	8.92
8	Dossing Pump(1.15KW)	1	1150	1150	1.15	4.60
9	Refrigerator	2	1800	3600	3.6	86.40
10	Deep Freezer	1	1800	1800	1.8	43.20
Engineering Hostel						
1	Tube Light	320	35	11200	11.2	89.60
2	48" Ceiling Fan	210	65	13650	13.65	136.50
3	Exhaust Fan	36	50	1800	1.8	14.40
4	Water Heater(3kw)	1	3000	3000	3	12.00
5	Water Cooler(1.5KW)	1	1500	1500	1.5	12.00
6	Submersible Motor(2.22KW)	1	2228	2228	2.228	8.91
7	Sewage Motor(3.74KW)	1	3740	3740	3.74	14.96
8	Sump Motor(2.22KW)	2	2228	4456	4.456	17.82
Nautical civil engineering block						
1	Tube Light	300	35	10500	10.5	84.00
2	48" Ceiling Fan	150	70	10500	10.5	84.00
3	Air Conditioner(2KW)	6	2000	12000	12	72.00
4	Water Cooler(1.25KW)	2	1250	2500	2.5	20.00
5	Pedestal Fan	6	65	390	0.39	1.17

VAELS EDUCATIONAL TRUST - 588						
Equipments		Qty	Watts/unit	Watts	KW	kWh/Day
6	Exhaust Fan	8	50	400	0.4	1.60
7	Computer	35	250	8750	8.75	70.00
8	Printer	2	100	200	0.2	1.20
9	Projector	3	100	300	0.3	0.90
10	Sewage Motor(1.11KW)	1	1118	1118	1.118	3.35
11	Borewell(1.11KW)	1	1118	1118	1.118	3.35
12	Sump Motor(2.23KW)	1	2230	2230	2.23	6.69
Ocean Block						
1	Tube Light	320	40	12800	12.8	76.80
2	48" Ceiling Fan	250	75	18750	18.75	112.50
3	Air Conditioner(2.5KW)	8	2500	20000	20	120.00
4	Pedestal Fan	6	100	600	0.6	1.80
5	Exhaust Fan	16	70	1120	1.12	4.48
6	Centrifuge Machine	4	500	2000	2	6.00
7	Deep Freezer	1	1800	1800	1.8	43.20
8	Refrigerator	1	1200	1200	1.2	28.80
9	Bio Safety Calorimeter	1	750	750	0.75	3.00
10	Sump Well Motor(2.23KW)	1	2230	2230	2.23	8.92
11	Computer	60	300	18000	18	72.00
12	Printer	8	200	1600	1.6	6.40
13	Projector	8	200	1600	1.6	6.40
Shivalaya						
1	Tube Light	390	40	15600	15.6	93.60
2	48" Ceiling Fan	250	75	18750	18.75	112.50
3	Projector	26	100	2600	2.6	10.40
4	Computers	58	300	17400	17.4	104.40
5	Printer	8	100	800	0.8	3.20
6	Focus Light	6	450	2700	2.7	5.40
7	Speaker	12	20	240	0.24	0.48
8	Air Conditioner(2.5KW)	16	2500	40000	40	240.00
9	Air Conditioner(3KW)	2	3000	6000	6	36.00
10	Spot Light	36	30	1080	1.08	2.16
11	Water Cooler(1.5KW)	3	1500	4500	4.5	27.00
Law Block						
1	Tube Light	140	40	5600	5.6	33.60
2	Projector	16	80	1280	1.28	5.12
3	48" Ceiling Fan	100	75	7500	7.5	45.00
4	Exhaust Fan	9	50	450	0.45	1.80
5	Air Conditioner(2.4kw)	40	2425	97000	97	582.00
6	Computer	15	200	3000	3	18.00
7	Printer	3	80	240	0.24	1.44
8	Open well Motor(2.23KW)	1	2238	2238	2.238	8.95

VAELS EDUCATIONAL TRUST - 588						
Equipments		Qty	Watts/unit	Watts	KW	kWh/Day
9	Main Sump(2.23KW)	2	2238	4476	4.476	17.90
10	Sewage Motor(1.12KW)	1	1120	1120	1.12	4.48
School Block						
1	Tube Light	153	30	4590	4.59	27.54
2	Projector	20	80	1600	1.6	9.60
3	48" Ceiling Fan	121	75	9075	9.075	54.45
4	Exhaust Fan	11	50	550	0.55	2.20
5	Air Conditioner(1.5kw)	11	1500	16500	16.5	99.00
6	Computer	10	300	3000	3	18.00
7	Printer	3	100	300	0.3	1.80
8	Water Cooler(1.5KW)	2	1500	3000	3	18.00
9	Focus Light	5	150	750	0.75	1.50
10	Speaker	4	20	80	0.08	0.16
Alma UG & PG Hostel						
1	Tube Light	260	20	5200	5.2	31.20
2	48" Ceiling Fan	160	75	12000	12	72.00
3	Exhaust Fan	24	50	1200	1.2	4.80
4	Water Heater(2.7kw)	2	2700	5400	5.4	16.20
5	Water Cooler(1.5KW)	2	1500	3000	3	9.00
6	TV	2	130	260	0.26	0.78
500KVA Substation						
1	Tube Light	6	20	120	0.12	0.72
2	48" Ceiling Fan	1	75	75	0.075	0.45
3	Pedestal Fan	1	70	70	0.07	0.21
4	Exhaust Fan	2	50	100	0.1	0.30
Street Light						
1	VELS	41	95	4445	4.445	26.67
Total Consumption						10063.89

Electrical Equipment in the University and its Energy Consumption - Vaels Educational Trust (Service 2)

Equipments		Qty	Watts/unit	Watts	KW	kWh/Day
RMG room						
1	Tube Light	10	40	400	0.4	2.40
2	48" Ceiling Fan	9	75	675	0.675	4.05
3	Focus Light	5	150	750	0.75	1.50
4	Heater	1	400	400	0.4	1.60
VIBA building						
1	Tube Light	225	40	9000	9	54.00
2	2x2 LED	165	35	5775	5.775	34.65
3	1x1 LED	150	25	3750	3.75	22.50
4	48" Ceiling Fan	111	75	8325	8.325	49.95
5	Chandelier Light	4	800	3200	3.2	6.40
6	Projector	22	100	2200	2.2	4.40
7	Computers	140	300	42000	42	252.00
8	Printer	15	100	1500	1.5	9.00
9	Xerox	1	1200	1200	1.2	7.20
10	Exhaust Fan	18	100	1800	1.8	7.20
11	Focus Light	18	300	5400	5.4	10.80
12	Speaker	31	25	775	0.775	1.55
13	Air Conditioner(2kw)	72	2000	144000	144	864.00
14	Spot Light	24	30	720	0.72	1.44
15	Water Cooler(1.5KW)	4	1500	6000	6	18.00
16	Tv	7	230	1610	1.61	4.83
17	Fridge	1	1800	1800	1.8	43.20
18	Induction Stove	1	800	800	0.8	2.40
19	Coffee Maker	1	200	200	0.2	0.60
20	Water Heater	2	1200	2400	2.4	7.20
21	Cash Counting Machine	1	400	400	0.4	1.20
22	VIBA Opp Submersible Motor(2.23KW)	1	2238	2238	2.238	6.71
23	Foundation Motor(5.6KW)	1	5600	5600	5.6	16.80
24	Filter Motor(1.5KW)	1	1500	1500	1.5	4.50
25	RO Plant(0.75KW)	1	750	750	0.75	2.25
University / Admin Building						
1	Tube Light	479	40	19160	19.16	114.96
2	2x2 LED	136	35	4760	4.76	28.56
3	PL Lamp	76	35	2660	2.66	10.64
4	48" Ceiling Fan	405	75	30375	30.375	182.25
5	Projector	35	100	3500	3.5	7.00
6	Computers	260	270	70200	70.2	421.20
7	Printer	18	110	1980	1.98	11.88
8	Xerox	3	1000	3000	3	12.00

	Equipments	Qty	Watts/unit	Watts	KW	kWh/Day
9	Exhaust Fan	16	100	1600	1.6	4.80
10	Focus Light	6	300	1800	1.8	3.60
11	Speaker	12	30	360	0.36	0.72
12	Air Conditioner(2.4KW)	62	2400	148800	148.8	892.80
13	Spot Light	15	25	375	0.375	0.38
14	Water Cooler(1.5KW)	4	1500	6000	6	36.00
15	Tv	1	230	230	0.23	0.69
16	Fridge	1	1500	1500	1.5	36.00
17	Counting Machine	2	800	1600	1.6	6.40
18	Sump Motor(1.7KW)	2	1700	3400	3.4	10.20
Thermal Lab						
1	Tube Light	16	40	640	0.64	3.84
2	Wall Mount Fan	8	75	600	0.6	3.60
3	High Beam Light	2	150	300	0.3	0.60
4	Lab Motors(0.75kw)	40	746	29840	29.84	179.04
Fluid mechanics Lab						
1	Tube Light	16	40	640	0.64	3.84
2	Wall Mount Fan	8	75	600	0.6	3.60
3	High Beam Light	2	150	300	0.3	0.60
4	Lab Motors(0.75kw)	30	746	22380	22.38	89.52
Manufacturing Lab						
1	Tube Light	16	40	640	0.64	3.84
2	Wall Mount Fan	8	75	600	0.6	3.60
3	High Beam Light	2	150	300	0.3	0.60
4	Lab Motors(0.75kw)	60	746	44760	44.76	179.04
Power House						
1	Tube Light	10	40	400	0.4	2.40
2	48" Ceiling Fan	5	75	375	0.375	2.25
3	Pedestal Fan	2	100	200	0.2	1.20
4	Exhaust Fan	3	70	210	0.21	1.26
5	Computer	2	250	500	0.5	3.00
6	Printer	1	100	100	0.1	0.60
7	Heater	1	635	635	0.635	2.54
GYM Building						
1	Tube Light	29	40	1160	1.16	6.96
2	Focus Light	2	200	400	0.4	0.80
3	1x1 LED	15	25	375	0.375	2.25
4	48" Ceiling Fan	16	75	1200	1.2	7.20
5	Pedestal Fan	3	100	300	0.3	1.80
6	Battery Tester	2	750	1500	1.5	6.00
7	Computers	9	300	2700	2.7	16.20
8	Printer	3	100	300	0.3	1.80
10	Exhaust Fan	4	100	400	0.4	1.60

Equipments		Qty	Watts/unit	Watts	KW	kWh/Day
11	Automatic Machine	1	500	500	0.5	3.00
12	Weight Balance	2	500	1000	1	6.00
13	Gallantry	1	1250	1250	1.25	7.50
14	Fume Hood	1	2000	2000	2	12.00
15	Muffle Fume	1	1500	1500	1.5	9.00
16	Hot Air Oven(3KW)	2	3000	6000	6	36.00
17	Glove Box	1	1200	1200	1.2	4.80
18	Motor(1.5KW)	1	1480	1480	1.48	4.44
19	Motor(3.72KW)	1	3720	3720	3.72	11.16
TTI						
1	Tube Light	400	40	16000	16	96.00
2	48" Ceiling Fan	350	75	26250	26.25	157.50
3	Exhaust Fan	14	70	980	0.98	5.88
4	Copier	2	1000	2000	2	8.00
5	Printer	14	120	1680	1.68	6.72
6	Water Cooler(1.5KW)	3	1500	4500	4.5	27.00
7	Air Conditioner(2.1KW)	12	2100	25200	25.2	151.20
8	Computers	250	250	62500	62.5	375.00
9	Sump Motor(2.23KW)	1	2230	2230	2.23	6.69
Swimming Pool						
1	Tube Light	6	40	240	0.24	0.72
2	Focus Light	4	150	600	0.6	1.80
3	Open Well Motor(2.22KW)	2	2228	4456	4.456	13.37
4	Open Well Motor(1.11KW)	1	1119	1119	1.119	3.36
Street Light						
1	VISTAS	23	95	2185	2.185	26.22

Section 13: Participation of Teams

In VISTAS the green auditing was done with the help of Pragna Shree Venture India Pvt. Ltd involves different student groups, teaching and non-teaching staff. The green audit began with the teams walking through all the different facilities at the college, determining the different types of appliances and utilities (lights, taps, toilets, fridges, etc.) as well as measuring the usage per item (Watts indicated on the appliance or measuring water from a tap) and identifying the relevant consumption patterns (such as how often an appliance is used) and their impacts. The staff and learners were interviewed to get details of usage, frequency or general characteristics of certain appliances. Data collection was done in the sectors such as Energy, Waste, Greening, Carbon footprint and water use. College records and documents were verified several times to clarify the data received through surveys and discussions.

The following Committees have been constituted to facilitate smooth functioning and administrate the affairs of the University for 2022-2023.

Committee as per Statutory Requirements:

1. Anti-Ragging Committee
2. Grievance Redressal Committee
3. SC/ST/OBC Grievance Committee
4. Internal Complaint Committee (ICC)
5. Gender Sensitization Cell.

Other Internal Committees:

6. Students Affairs Advisory Committee
7. Disciplinary Committee
8. Counselling and Guidance Committee
9. Examination Malpractice Enquiry Committee
10. Central Admission Committee
11. Fee Fixation Committee
12. Library Committee

13. Central Purchase and Stores Committee
14. Transport Committee
15. Extension Activities Committee
16. National Service Scheme Advisory Committee
17. Retractable Advisory Committee
18. Youth Red Cross Advisory Committee
19. Sports & Games Committee
20. Building Committee
21. Equivalency Committee
22. Cultural Committee
23. Hostel Advisory Committee
24. Women Welfare Committee
25. Equal Opportunity Cell.

Anti-Ragging Committee

S. No.	Name	Designation
Chairman		
1	Dr.P.Saravanan Ph :9962506245 Email: registrar@velsuniv.ac.in	Registrar
Civil & Police Administration		
2	Mr. Suresh Antony Mobile : 9003012925	Intelligent Services-S5 Pallavaram Police Station Pallavaram, Chennai – 600043
Local Media		
3	Mr. Sheldon Mark Jarrett Mobile : 9962236774 Email: Jarrett.sylvester@gmail.com	Media Artist Sterio Scopic Division L.V.Prasad Studio Saligramam,Chennai – 600 093
NGO'S		
4	Mr.Rangarajan.AL Country Manager India Literacy Project Mobile: 9444971268 E.Mail : alrangarajan@ilpnet.org	India Literacy Project Website : www.ilpnet.org Email id: alrangarajan@ilpnet.org
5	Mr.Panchaksharam.K Ph:044-2248 6791/92/93 E.Mail: sipapanchu@gmail.com sipa@vsnl.com	Secretary & CEO Federation of South India Producer Associations (SIPA) No.21,Anna Street Sathya Nagar Extension Anakaputhur,Chennai- 600070
Members		
6	Dr. A.Subramanian Ph: 9840641410 Email: dean.studentaffairs@velsuniv.ac.in	Dean Student Affairs
7	Capt.N.Kumar Ph. : 9361852531 Email: director.smts@velsuniv.ac.in	Director School of Maritime Studies
8	Dr.C.Dhanasekaran Ph: 9962506202 Email: hodmech@velsuniv.ac.in	Professor & HOD, Dept. of Mechanical School of Engineering
9	Dr.T.S.Shanmugarajan, Ph : 9566049808 Email : smrajan.sps@velsuniv.ac.in	Professor & Head, Department of Pharmaceutics School of Pharmaceutical Sciences

S. No.	Name	Designation
10	Mr.S.Thambusami Ph : 8825911653 Email:director.discipline@velsuniv.ac.in	Director Discipline & Safety, VISTAS
Parents		
11	Mr.S.Thangapushpam Ph : 86829 13266	F/o. T. Selva meena (I Year MBA General) No 5, Venkatapathy street, Near 18 mc road, Old Washermenpet, Chennai 21.
12	Mr. N S Srinivashulu Ph : 9025854445	F/o . N S Yogeshwar (II Year B.E. (CSE)) No. 50B Dhargah Rd, Zamin Pallavaram, Chennai - - 600034
Senior Students		
13	Ms. Varshini S Ph: 9789013337	I Year – MBA BA 1,SSB Sudharsan Apartment Palavanthangal Chennai 600114
14	Mr V R Siva Ph: 8056172731	I .M.Sc Computer Science 1.Narayana Swamy Street, Pallavaram, Chennai 600043
Junior Students		
15	Mr.K.P.Jeeva Ph:9345510742	I Year – B.E – AI &ML No 3 Bajana Koil Street Akkarambedu , Devadanam, Tiruvallur , Tamilnadu 601 203
16	Mr. V. Jayavarsha Ph: 8754557035	I Year – Pharm.D No. AS1/1, South Reddy Street, Ambattur, Athipet, Chennai- 600058.
17	Ms. Hemaalaya RA Ph.9962181461	II BA LLB (Hons) No.51,Seniamman Koil Street, Tondirapet Chennai – 600081
Non – Teaching Staff		
18	Ms.S. Bhuvaneshwari Ph: 9840740412 Email: ar.admission@velsuniv.ac.in	Assistant Registrar Admission

S. No.	Name	Designation
19	Ms. A.K. Pushpa Ph: 9003163174 Email : ar-exams@velsuniv.ac.in	Assistant Registrar Controller Of Examinations
Anti-Ragging Squad		
20	Dr.R.A.Kalaivani Ph: 9962506223 Email: director.sbs@velsuniv.ac.in	Dean School of Basic Sciences
21	Dr.P.Jagadeesan Mobile No.9962177879 Email: hodcommerce.general@velsuniv.ac.in	Professor & Head Dept. of Commerce (General) School of Management Studies & Commerce
22	Dr.S.Perumal Ph: 9941155023 Email : perumal.sls@velsuniv.ac.in	Professor & Head Dept. of Computer Science, School of Computing Sciences
23	Dr.C.Ronald Darwin Ph: 9444428759 Email : ronaldpharma@gmail.com	Professor and Head Dept. of Pharmacology, School of Pharmaceutical sciences,
24	Dr.S.Harihara Puthiran Ph : 9108925151 Email : drhariharan1975@gmal.com	Associate Professor Dept. of M.B.A., School of Management Studies
25	Gunasekaran. P Ph : 6379861511 Email : residentialdirector@velsuniv.ac.in	Residential Director VISTAS

Grievance Redressal Committee

S. No	Name	Designation
Chairman		
1.	Dr. A.Subramanian Ph: 9840641410 Email: dean.studentaffairs@velsuniv.ac.in	Dean Student Affairs
Members		
2.	Dr P Sujatha Ph : 8828250758 Email : sujatha.scs@velsuniv.ac.in	Professor & Head Department of BCA & IT School of Computing Sciences
3.	Dr.P. Shanumga Sundaram Ph : 9840126575 Email id: director.sps@velsuniv.ac.in	Director School of Pharmaceutical Sciences

S. No	Name	Designation
4.	Dr.K.Kalaivani Ph: 9952218448 Email: hodcse@velsuniv.ac.in	Associate Professor & Head Department. of CSE School of Engineering
5.	Mr.V.Karthikeyan Ph : 9840449248 Email: karthikeyan.law@velsuniv.ac.in	Assistant Professor & Head i/c School of Law

SC/ST/OBC Grievance Committee

S. No	Name	Designation
Chairperson		
1	Dr.Malarkodi Velraj Mobile:9884242196 Email:malarkodiv.sps@velsuniv.ac.in	Professor, Dept. of Pharmacognosy School of Pharmaceutical Sciences.
Members		
2	Dr.P.Jagadeesan Mobile No.9962177879 hodcommerce.general@velsuniv.ac.in	Professor & Head, Dept. of Commerce (General) School of Management Studies & Commerce
3	Dr.P. Vijayalakshmi. Mobile No : 9884748820 Email:Viji.se@velsuniv.ac.in	Associate Professor Dept. of Electronics and Communication Engg. School of Engineering.
4	Dr. Gavaskar.D Mobile No: 9965651646 Email:gavas.sbs@velsuniv.ac.in	Assistant Professor Department of Chemistry School of Basic Sciences
5	Ms .S. Bhuvaneshwari Ph: 9840740412 Email: ar.admission@velsuniv.ac.in	Assistant Registrar Admission
Students		
6	Ms.Harini Ph: 9345542943 Email: harinihari1607@velsuni.ac.in	B.E. CSE, I Year
7	Mr.V.Akash Ph: 9361845318 Email: subramakesh@gmail.com	B.Com. Gen. I Year
8	Mr.Danush.C.K Ph: 8754149979 Email: danushkamaraj79@gmail.com	B.A. LLB. II Year

Internal Complaint Committee (ICC)

S. No	Name	Designation
Chairperson		
1	Dr. Rajini.G Ph: 9443377437 Email: rajini.sms@velsuniv.ac.in	Professor &Head Department of MBA (General) School of Management Studies
Members		
2	Dr.C.Dhanasekaran Ph: 9962506202 E.mail: hodmech@velsuniv.ac.in	Professor & HOD Dept. of Mechanical Engg. School of Engineering
3	Dr.M.Thaiyalnayaki Ph: 9841875556 Email: hodbba@velsuniv.ac.in	Professor Department of Commerce (A&F) School of Management Studies & Commerce
4	Ms. A.K. Pushpa Ph: 9003163174 Email : ar-exams@velsuniv.ac.in	Assistant Registrar Controller Of Examinations
5	Ms.S. Jeseiursula Ph: 8608498740 Email: accounts@velsuniv.ac.in	Section Officer-Accounts & Finance.
NGO		
6	MR.RANGARAJAN.AL Country Manager, India Literacy Project 9444971268 alrangarajan@ilpnet.org	Country Manager, India Literacy Project Website : www.ilpnet.org Email id: alrangarajan@ilpnet.org
Students		
7	Mr. AnthonyShya Sundar Ph : 9884692041	BA LLB (HONS) - IV
8	Ms. Valliammai V Ph : 9342640695	B.COM (A& F) – II year
9	Ms Daisy Priya P Ph : 9150925350	Pharm D – III Year
10	Mr . Diwaker T Ph : 9884787924	MBA General – I year

Gender Sensitization Cell

S. No	Name	Designation
Chairperson		
1	Dr. Hemalatha.R.J Ph: 8608498740 Email : hodbiomedical@velsuniv.ac.in	Associate Professor and Head Dept of Bio Medical Engineering School of Engineering
Members		
2.	Dr.Jerritta .S Ph : 9840225105 Email : hodece@velsuniv.ac.in	Professor & Head Department of ECE School of Engineering
3.	Dr.K.Karthickeyan	Professor & Head Department of Pharmacy Practice School of Pharmaceutical Sciences
4.	Dr. Brindha Devi.P Ph : 9962506998 Email : hodb.techbiotech@velsuniv.ac.in	Associate Professor & Head Department of B Tech Biotech School of Engineering
5.	Dr.Thirumagal.P.G. Ph : 9094948358 Email: tmahal.sms@velsuniv.ac.in	Associate Professor Dept.of MBA(Business Analytics) School of Management Studies
6.	Ms.Salini.C Ph : 8883446363 Email : saline.law@velsuniv.ac.in	Assistant Professor School of Law,
7.	Mr. Prabhakar Christopher David.M Ph : 9962323513 Email: prabhakar.sms@velsuniv.ac.in	Assistant Professor, Dept. of BBA School of Management Studies
Students		
8.	Mr. Rahuljha.S	BE CSE, II Year
9.	Mr.Vignesh. S	II year B.Tech. Biotechnology
10.	Ms. Mohana Priya	I year M.Sc. Chemistry

Student Affairs Advisory Committee

S. No	Name	Designation
Chairman		
1	Dr. A.Subramanian	Dean Student Affairs
Members		
2	Capt.N.Kumar	Director , School of Maritime Studies
3	Dr. Kathireshan A.K	Director School of Life Science
4	Dr.T.S.Shanmugarajan	Professor & Head, Department of Pharmaceutics School of Pharmaceutical Sciences,
5	Dr. Sivasankar.V	Professor and Head School of Languages (Tamil)
6	Dr. Vennila Shree.S	Professor & Head Dept. of Commerce (CS) School of Management Studies & Commerce
7	Dr. Perumal.S	Professor & Head Dept. of Computer Science School of Computing Sciences
8	Dr.P.Sri Jothi	Professor & Head Dept. of Visual Communication School of Mass Communication
9	Dr. Sivaganesan.S	Associate Professor Department of Mechanical Engg. School of Engineering
10	Dr. Ulaga Priya.K	Associate Professor Dept. of CSE School of Engineering
11	Mr. Rohan Kumar.D	Assistant Professor and Head (i/c) School of Law
12	Dr.A.Ganesamurthy	Deputy Librarian, Dept. of Library
13	Dr.A.Arangannal	Physical Director School of Physical Education
Students		
14	Mr.Mohammed Anees	CSE III Year Mobile: +91 90251 98442
15	Ms.Saipooja. G	Pharm.D III Year / A Sec. Mobile: +91 8056041171
16	Mr.A.Clement Christopher	MBA General I Year / C Sec. Mobile: +91 9444556498

Disciplinary Committee

S. No	Name	Designation
Chairman		
1.	Dr. A.Subramanian	Dean Student Affairs
Members		
2.	Dr. S.Ambika Kumari	Dean, School of Law
3.	Dr.P.Shanmugasundaram	Director, School of Pharmaceutical Sciences
4.	Dr. Kathireshan A.K	Director, School of Life Sciences
5.	Dr.C.Dhanasekaran	Professor & HOD, Dept. of Mechanical School of Engineering
6.	Dr. Sivasankar.V	Professor and HOD School of Languages (Tamil)
7.	Mr.S.Thambusami	Director Discipline & Safety, VISTAS

Counselling and Guidance Committee

S. No	Name	Designation
Chairman		
1	Dr.M.Chandrasekaran Ph:9962506351 Email: director.mech@velsuniv.ac.in	Dean Academic Courses Director of Mechanical Engg. School of Engineering
Members		
2	Dr.S.Vasantha Ph: 9176132279 Email: vasantha.sms@velsuniv.ac.in	Professor & Head Dept. of MBA (LSM) School of Management Studies
3	Dr. S.Prasanna Ph:9884014466 Email: prasanna.scs@velsuniv.ac.in	Professor & Head, Dept. of MCA & BCA (Hons.) School of Computing Sciences
4	Dr.S Vennilla Shree Mobile No. 9080030619 Email: hodcommerce.csl@velsuniv.ac.in	Professor & Head, Dept. of Commerce (CS) School of Management Studies & Commerce
5	Dr.T.Jaya Ph:9941156806 Email: jaya.se@velsuniv.ac.in	Associate Professor, Department of ECE School of Engineering
6	Dr.T.Ilango Ph:8903120517 Email: hodcivil@velsuniv.ac.in	Assistant Professor & Head(i/c) Dept. of Civil, School of Engineering
7	Mr.M.S.Chithan Ph: 9940285920 Email: placement@velsuniv.ac.in	Chief Placement Officer Placement Cell
8	Ms.V.S.Amala Ph. 9444293154 Email: studentcounsellor@velsuniv.ac.in	Student Counsellor

Examination Malpractice Enquiry Committee

S. No	Name	Designation
Chairman		
1.	Dr. A. Udhaya Kumar	Controller of Examinations
Members		
2.	Chief Superintendent of Respective University Examinations	Chief Superintendent
3.	Dr.M.Chandrasekaran	Dean Academic Courses Director of Mechanical Engg. School of Engineering
4	Dr. S.Ambika Kumari	Dean School of Law
5	Dr. Kathireshan A.K	Director School of Life Science
6	Dr. P.Sujatha	Professor & Head Dept. of BCA School of Computing Sciences

Central Admission Committee

S.No.	Name	Designation
Chairman		
1	Dr.M.Chandrasekaran	Dean Academic Courses Director of Mechanical Engg. School of Engineering
Members		
2	Dr.R.A.Kalaivani	Dean School of Basic Sciences
3	Dr.T.S.Shanmugarajan, Ph : 9566049808 Email: smrajan.sps@velsuniv.ac.in	Professor & Head, School of Pharmaceutical Sciences,
4	Dr. Anandan.R	Professor & Head Department of CSE School of Engineering
5	Dr. Vennila Shree.S	Professor Dept. of Commerce (CS) School of Management Studies & Commerce
6	Dr. V.Jayalakshmi	Professor, Department of MCA, School of Computing Sciences

Members of Fee Fixation Committee

S. No	Name	Designation
Chairman		
1.	Thiru.K.Ramaswamy	Former District and Sessions Judge, 38, LB Road, Judges Avenue, Kamaraj Nagar, Thiruvanmiyur, Chennai – 600 041.
Members		
2.	Mr.B.Kalyanakumar	Finance Director
3.	Thiru.T.Pitchandi	IAS (Retd) Former Secretary & Commissioner HR&CE, Govt. of Tamil Nadu
4.	Dr Rajendran N 044-22358637	Professor & Head , Department of Chemistry Anna University, Chennai,
5.	Capt.N.Kumar	Director, School of Maritime Studies
6.	Dr. R.A.Kalaivani	Dean School of Basic Sciences,
General Secretary		
7.	Dr.M.Chandrasekaran	Dean Academic Courses Director of Mechanical Engg. School of Engineering

Library Committee

S. No	Name	Designation
Chairman		
1	Dr. Arun.S	Director, IQAC Professor, Dept. of CSE School of Engineering
Members		
2	Dr.M.Chandrasekaran	Dean Academic Courses Director of Mechanical Engg. School of Engineering
3	Dr. S.Ambika Kumari	Dean, School of Law
4	Capt.N.Kumar	Director, School of Maritime Studies
5	Dr.P.Shanmugasundaram	Director, School of Pharmaceutical Sciences
6	Dr. Kathireshan A.K	Director, School of Life Science
7	Dr.S.Prasanna	Professor & Head Department of MCA&BCA (Hons.) School of Computing Sciences
Member Secretary		
8	Dr.A.Ganesamurthy	Deputy Librarian Dept. of Library

Central Purchase and Stores Committee

S. No	Name	Designation
Chairman		
1	Dr.C.Dhanasekaran	Professor & HOD Dept. of Mechanical Engg. School of Engineering
Members		
2	Mr.V.Sriraman	Asst. Professor Dept. of Chemistry School of Basic Sciences
3	Ms. Sudha Babulnath	Chief Human Resource Officer HR Department
4	Mr. Sreedhar. B	Senior Purchase Manager Purchase Department
5	Mr.Y.S.Pradeep Kumar	Stores Manager
6	Mr.Arumugam.P	Asst. Section Officer Purchase Department

Transport Committee

S. No	Name	Designation
Chairperson		
1	Dr. K.Sheeba Mobile No: 9444162954 hodintegrated.sedu@velsuniv.ac.in	Associate Professor & Head(i/c) School of Education
Members		
2	Dr.K.Kamala Mobile No.8939090553 kkamaladr@gmail.com	Professor, Department of Tamil School of Languages
3	Dr.A. Akila Mobile No. 9840627801 akila.scs@velsuniv.ac.in	Associate Professor Dept of Computer Science School of Computing Sciences
4	Dr.P.Vijayalakshmi Mobil No.9884748820 Viji.se@velsuniv.ac.in	Associate Professor Dept of ECE School of Engineering
5	Mr.S.Vaidhyanathan Mobile No: 9884679355	Administrative Officer
6	Mr.S. Venkatesh Mobile No.9962506230 Vemkat.the.don18@gmail.com	Transport Incharge Dept. of Transport

Extension Activities Committee

S. No	Name	Designation
Chairman		
1.	Dr. P. Jagadeesan	Professor & Head, Dept. of Commerce (G) School of Management Studies & Commerce
Members		
2	Dr. M. Chandrasekaran	Dean Academic Courses Director of Mechanical Engg. School of Engineering
3	Dr.P.Shanmugasundaram	Director, School of Pharmaceutical Sciences
4	Dr. Hemalatha.R.J	Associate Professor and Head Dept of Bio Medical Engineering School of Engineering
5	Dr.N.Shanmuga Sundaram	Associate Professor & Head i/c, Department of EEE School of Engineering
6	Dr. S.Preetha	Professor, Department of MBA School of Management Studies
7	Dr. Sivasankar.V	Professor and HOD School of Languages (Tamil)
8	Dr.P.Sri Jothi	Professor & Head School of Mass Communication
9	Dr.S.Jerritta	Professor & Head, Dept. of ECE School of Engineering
10	Dr.V.Girija	Associate Professor School of Education
11	Dr.M.Prabhakaran	Assistant Professor Dept. of Tamil School of Languages

National Service Scheme (NSS) Advisory Committee

S. No	Name	Designation
CHAIRMAN		
1.	Dr. P. Jagadeesan	Professor & Head, Dept. of Commerce - (General) School of Management Studies & Commerce
MEMBERS		
2.	Dr. Kathiresan A.K	Director, School of Life Science Dept. of Microbiology
3	Dr. M. Prabhakaran	NSS Co-ordinator Assistant Professor, Dept. of Tamil School of Languages
4	Dr. Karunakaran.K	Associate Professor Dept of Mechanical School of Engineering
5	Dr. A. Manikandan UNIT – I	Assistant Professor Department of CSE School of Engineering
6	Dr. V. Maheswari UNIT - II	Associate Professor, Dept. of Mathematics School of Basic Science
7	Dr.P.Vijayalakshmi UNIT - III	Associate Professor Department of ECE School of Engineering
8	Dr. I. Somasundaram UNIT - IV	Associate Professor Sch. of Pharm. Sciences

Rotract Advisory Committee

S. No	Name	Designation
Chairperson		
1.	Dr.M.Thaiyalnayaki	Professor, Dept. of Commerce (A&F) School of Management Studies &Commerce
Members		
2.	Dr.P.Jagadeesan	Professor & Head, Dept. of Commerce - (General) School of Management Studies & Commerce
3	Dr. Prakash.B	Associate Professor & Head Dept. of Bio Technology School of Life Science
4	Dr.V. Maheswari	Associate Professor, Dept. of Mathematics School of Basic Science
5	Dr. T. Ilango	Assistant Professor and Head i/c Dept. of Civil, School of Engineering
6	Dr. Poornima Srinivasan	Assistant Professor, Dept. of Hindi School of Languages
7	Dr. Jeyanthi.R	Assistant Professor School of Education

Youth Red Cross Advisory Committee

S. No	Name	Designation
Chairman		
1.	Dr.S.Chandra Chud	Professor, Dept. of Economics School of Management Studies & Commerce
Members		
2	Dr. Radha Mahendran	Professor & Head, Dept. of Bioinformatics School of Life Sciences
3.	Dr.M.Vijey Aanandhi	Professor & Head, Dept. of Chemistry & Analysis School of Pharmaceutical Sciences
4	Dr.A.S.Arunachalam	Associate Professor, Dept. of Computer Science School of Computing Sciences
5	Dr.T.Ilango	Assistant Professor and Head i/c Dept. of Civil Engg. School of Engineering
6	Dr. Hemalatha.R.J	Associate Professor and Head Dept. of Bio Medical Engineering School of Engineering
7	Mr.M. Prabhakar Christopher David	Assistant Professor, Dept. of BBA School of Management Studies & Commerce

Sports & Games Committee

S. No	Name	Designation
Chairman		
1	Dr. A.Subramanian	Dean Student Affairs
Members		
2	Dr.S.N. Sugumar	Professor & Head, Dept. of Economics School of Management Studies & Commerce
3	Mr.S.Thambusami	Director Discipline & Safety, VISTAS
4	Dr.A.K.Kathiresan	Director School of Life Sciences
5	Dr.C.Dhanasekaran	Professor & HOD Dept. of Mechanical Engg. School of Engineering
6	Dr.P.Senthil Selvam	Professor & Head School of Physiotherapy
7	Dr. S.Nangaiyar Karasi	Assistant Professor School of Education
8	Dr.S.Sivaganesan	Associate Professor, Dept. of Mech. Engg. School of Engineering
9	Dr.S.Perumal	Professor & Head, Dept. of Computer Science School of Computing Sciences
10	Dr.C.Shanthi	Associate Professor, Department of BCA & IT School of Computing Sciences
Students		
11	Mr.Sarathi Amarnath. S	M.B.A. Innovation Entrepreneurship and Venture Development - I Year / A Sec.
12	Ms.Divya Dharshini. N	B.A. Economics II Year / A Sec.

S. No	Name	Designation
Member Secretary		
13	Dr.A.Arangannal	Physical Director

Building Committee

S. No	Name	Designation
Chairman		
1.	Dr. T. Ilango	Assistant Professor and Head i/c Department of Civil, School of Engineering
Members		
2	Mr.B.Kalyanakumar	Finance Director Department of Finance
3	Dr.N.Shanmuga Sundaram	Associate Professor & Head i/c, Department of EEE School of Engineering
4	Mr.Gunasekaran. P	Residential Director Hostel (Men & Women)
5	Mr. Siva Perumal.P	Civil Engineer, Department of Maintenance
Member Secretary		
6.	Dr. R.Sridhar	Associate Professor Dept. of Mechanical Engg. School of Engg.

Equivalency Committee

S. No	Name	Designation
Chairman		
1.	Dr.A. Udhaya Kumar Ph : 996250624	Controller of Examinations
Members		
2	Dr. M. Chandrasekaran Ph : 9962506351	Dean Academic Courses Director of Mechanical Engg. School of Engineering
3	Dr.R.A.Kalaivani Ph: 9962506223	Dean School of Basic Sciences
4	Dr. Arun.S Ph: 9787115195	Director, IQAC Professor, Dept. of CSE School of Engineering
5	Dr.G. Rajini Ph :9443377437	Professor & Head Department of MBA (General) School of Management Studies
6	Dr.V.Jeyalakshmi Ph : 9884830831	Professor Department of MCA School of Computing Sciences

Cultural Committee

S. No	Name	Designation
Chairperson		
1.	Dr.R.A.Kalaivani	Dean School of Basic Sciences
Members		
2	Dr.A.A.Jayashree Prabhakar	Associate Professor & Head i/c Dept. of English School of Languages
3	Dr. Sridhar.R	Associate Professor, Department of Mechanical School of Engineering
4	Dr. Madhumita.G	Associate Professor Dept. of MBA LSCM School of Management Studies
5	Dr.M. Prabhakaran	Assistant Professor, Dept. of Tamil School of Languages
6	Mr. Thulasi Bharathi.M	Assistant Professor Dept of Animation School of Mass Communication
7	Mr.Sheldon Mark Jarret	Assistant Professor, Department of Animation, School of Mass Communication
8	Dr..M.Monisha	Assistant Professor Dept. of ECE School of Engineering
Students		
9	Mr.Bernatsha G	B.Tech IT- III year
10	Ms.Nivedha	MBA -I year
11	Mr.Joel A	BA Music – II year
12	Mr.Usaman S	B.Sc (CS)- III year
13	Ms.Roshna M D	B.Sc Micro Biology – I year
14	Mr.Lingaraj. G	B.Com – II year
15	Mr.Ferosh	BA LLB – II year

Hostel Advisory Committee

S. No	Name	Designation
Chairman		
1.	Dr. A.Subramanian	Dean Student Affairs
Members		
2	Dr.C.Dhanasekaran	Professor & Head Department of Mechanical Engg. School of Engineering
3	Dr.Jagadeesan.P	Professor & Head, Dept. of Commerce (General) School of Management Studies & Commerce & Warden – Men's Hostel
4	Ms.G.Suganthi	Assistant Professor Physical Education
5	Mr.P.Gunasekaran	Residential Director Hostel(Men & Women)
Residential Warden		
6	Dr.K.S.Thirunaukkarasu	Deputy Warden – Emerald Boys Hostel
7	Mr.Anandhu Rajeev	Deputy Warden – Diamond Boys Hostel
8	Mr.Sasikumar	Deputy Warden – Sapphire Boys Hostel
9	Ms.Parvathavarthini	Deputy Warden – Ruby Girls Hostel
10	Dr.Kalpana.G, B.Com. General	Deputy Warden, Pearl Girls Hostel
Students		
11	Mr. Beroz Sherim. J	B.A. LL.B (Honours) II Year / A Sec. Hostel: Sapphire Boys Hostel Mobile: +91 8925175495
12	.Mr. Narayana Naveen Kumar S	B.Tech (CS- ML) – II year Hostel: Emerald Boys Hostel Mobile - 9363049738
13	Ms.Gobikaa. T	B.Com. General II Year / B Sec. Hostel: Ruby Girls Hostel

Women Welfare Committee

S. No	Name	Designation
Chairperson		
1	Dr.R.A.Kalaivani	Dean School of Basic Sciences,
Members		
2.	Dr.Maheswari.P	Associate Professor School of Pharmaceutical Sciences
3	Dr.G.R.Jothilakshmi.G.R	Associate Professor, Department of ECE, School of Engineering
4	Dr.Meenakshi .S	Associate Professor & Head, Department of Mathematics School of Basic Sciences
5	Dr. Rajini.G	Professor &Head Dept. of MBA School of Management Studies
6	Dr. S. Vasantha	Professor & Head Dept. of MBA School of Management Studies
7	Dr.G.Gayathri	Associate Professor Dept. of Microbiology School of Life Sciences
8	Ms.M.S.Vijayalakshmi	Deputy Registrar Administration
Students		
9	Ms. Harshitha.B	Pharm. D, I Year
10	Ms. Rajeswari R	MBA IEV - I year

Equal Opportunity Cell

S. No	Name	Designation
Chairperson		
1.	Dr. S. Vasantha	Professor & Head Department of MBA(LSM) School of Management Studies
Members		
2	Dr. V. Muthuraman	Professor, Dept. of Mechanical Engg. School of Engineering
3	Dr.Gunasekaran.K	Associate Professor & Head Dept. of BBA School of Management Studies and Commerce
4	Dr. N. Kumar	Professor Department of CSE School of Engineering
5	Dr. S. Kamalakannan	Associate Professor, Dept. of BCA & IT School of Computing Sciences
6	Dr.Maheswari.V	Associate Professor Department of Mathematics School of Basic Science
Parent & Student Name		
7	Ms. Roopa Latha.S	MBA (LSM) I-Year
8	Ms. S. Kamrunisha	BBA I-Year

Section 14: Best Practices / Initiatives done by the University;

Solar System



Wind Solar Hybrid System



- Biogas plant erected
- Machinery is installed for the conversion of biodegradable solid waste into manure.
- Solar lighting systems in VISTAS's campus.
- Wind Energy is used through our 2 Windmills under the agreements with TANGEDCO.
- Energy Audit, Safety Audit, and Green Audit are being conducted regularly.
- Green generators are installed to overcome the energy crises.
- Only Bharath 3 fuel-efficient vehicles are used and vehicles are allowed to park only in the selected area and not within the campus.
- Genset usage is restricted and is used only sparingly.
- The inverter is used when there is power shut down for a short duration instead of operating generators.
- The LED lamps are progressively used in the place of other lamps.
- Partitioning the big halls into small size/falls roofing is carried out to minimize the power consumption.
- All the rooms have instruction boards to switch-off fans, lights, and AC and Computer terminals when not in use.
- The University has installed three windmills with a capacity of 250 KW H.T. (Each) and the Annual Wind Power Generation on average is around 85,028 units. Three Wind Mills are supplying power to the Tamil Nadu Power Grid and withdrawing the power from the grid to the university's requirements.
- Solar lights are used on the main roads of the university.
- The Biogas Plant is in operation and the Biogas produced from food waste, decomposable organic materials and kitchen wastes is used in Hostel.

Section 15: Conclusion

The green audit assists in the process of monitoring and verifying the performance in the environmental arena and is fast becoming an indispensable aid to decision making in VISTAS.

The green audit reports assist in the process of attaining an eco-friendly approach to the sustainable development of the University. Hope that the results presented in the green auditing report will serve as an opportunity to improve the environment-related practices and resource usage at the university as well as new activities and innovative practices. A few recommendations are added to waste management using eco-friendly and scientific techniques. This may lead to a prosperous future in the context of Green Campus and thus sustainable environment and community development.

It has been shown frequently that the practical suggestions, alternatives, and observations that have resulted from audits have added positive value to the audited organization. An outside view, perspective and opinion often help staff who have been too close to problems or methods to see the value of alternative approaches. A green audit report is a very powerful and valuable communications tool to use when working with various stakeholders who need to be convinced that things are running smoothly and that systems and procedures are coping with natural changes and modifications that occur.

Section 16. List of Recommendations

Common Recommendations

- Strengthening of existing environmental policy for the overall University
- Upscaling the water, waste and energy management systems

Criteria Wise Recommendations

Energy

- Conduct more save energy awareness programs for students and staff.

Section 17: Disclaimer

Pragnaa Shree Venture India Pvt. Ltd has prepared this report for Vels University based on input data submitted by the representatives of the University.

It is further informed that the conclusions are arrived at following best estimates and no representation, warranty or undertaking, express or implied is made and no responsibility is accepted by Audit Team in this report or for any direct or consequential loss arising from any use of the information, statements or forecasts in the report.

If you wish to distribute copies of this report external to your organisation, then all pages must be included.

Pragnaa Shree Venture India Pvt. Ltd, its staff and agents shall keep confidential all information relating to your organisation and shall not disclose any such information to any third party, except that in the public domain or required by law or relevant accreditation bodies.